

TOOLS



TOOLS

SHOES	P2
KNEE PADS AND FOAM BOARD	P3
ROLLING SEATS AND TROLLEYS.....	P4
WORK BENCHES	P5
"RV175" VACUUM PUMP SUCTION CUP	P6
SINGLE, DOUBLE AND TRIPLE SUCTION CUPS.....	P7
SLABS LIFTERS	P8
SCREEDING TOOLS	P9
ANTI-BOUNCE HAMMERS AND HAND TILE BEATER	P10
WOLFRAM CARBIDE DISCS FOR GRINDER AND SCRAPING TOOLS	P11

MEASURING AND LAYOUT TOOLS

ADJUSTABLE SQUARE AND ANGLE GUIDES, STEP-SETTER (FOR SETTING STAIRS) WALL LEVELLING GUIDES	P12
---	-----

In addition to the tools already shown in the previous sections, professional tile installers need many others; such as knee pads, suction cups, trolleys, workbenches, hammers... as well as measuring and layout tools. All carefully designed to provide the professionals the highest efficiency and precision. From the adjustable squares, to the innovative system to set mortar base. And again the very useful wall leveling guides as well as the practical angle guides and the step-setter.



SHOES

MADE IN ITALY



137



137MOLLA



137B



137BMOLLA



137HUSKY



WAFFLED SHOES FOR WALKING ON SET TILE

- Made of impact resistant plastic with a "waffled" (textured) bottom to provide grip and to distribute the wearers weight evenly over the surface.
- The toe-guard is included and designed to accommodate most safety-shoes.
- Available with spring or elastic straps.

- Shoes are perfectly flat in order to distribute weight evenly over the surface.
- Shoe surface measures approximately 20x39 cm (12 square inches).

Part No.	Barcode	Box Icon	Description	Weight	Weight	Dimensions	Dimensions	Weight	Weight
137	8024648000019	10	Tiles shoes with elastic strap (per pair)	1,2 Kg	2.6 lbs	50x43xh 43 cm	19 5/8"x17"xh 17"	13,2 Kg	29.1 lbs
137MOLLA	8024648000026	10	Tile shoes with spring (per pair)	1,3 Kg	2.9 lbs			14,2 Kg	31.3 lbs

SMOOTH SHOES FOR WALKING ON MORTAR BASE

Part No.	Barcode	Box Icon	Description	Weight	Weight	Dimensions	Dimensions	Weight	Weight
137B	8024648000033	12	Shoes for mortar base with elastic strap (pair)	1,1 Kg	2.4 lbs	50x43xh 43 cm	19 5/8"x17"xh 17"	14,4 Kg	31.7 lbs
137BMOLLA	8024648000040	12	Shoes for mortar base with spring (pair)	1,2 Kg	2.6 lbs			15,6 Kg	34.4 lbs

SHOES FOR WALKING ON THE ADHESIVE WHILE SETTING TILES

- Steel bottom, replaceable toe-guard made of nylon. The toe-guard is designed for safety- shoes. Straps to the shoe with a spring strap.

Part No.	Barcode	Box Icon	Description	Weight	Weight	Dimensions	Dimensions	Weight	Weight
137HUSKY	8024648000057	4	Toothed shoes "Husky" (per pair)	1,7 Kg	3.7 lbs	35x27xh 31 cm	14"x10 5/8"x h 12"	7,1 Kg	15.7 lbs

REPLACEMENT PARTS

Part No.	Barcode	Box Icon	Description	Weight	Weight	Dimensions	Dimensions	Weight	Weight
196	8024648004888	10	Elastic strap for shoes	20 gr	0.7 oz	-	-	200 gr	7.1 oz
314TR02D	8024648005236	10	Spring with clip	40 gr	1.4 oz	27x15xh 10 cm	10 5/8"x6"xh 4"	400 gr	14.1 oz
137FE01D	8024608011918	20	Elastic strap holder	1 gr	0.04 oz	-	-	20 gr	0.7 oz





138RELAX



138SOFF



138



PACK



MADE IN ITALY

BOX



BOX



196GCA



MADE IN ITALY

330



KNEE PADS RELAX-GEL

- Plastic shell: maximum knee protection.
- Gel inner padding.

- Comfort elastic fabric with single strap system.

Prt No.	Barcode	Box	Description	Weight	Dimensions	Volume	Net Weight	Gross Weight
138RELAX	8024648062680	12	Knee pads (per pair)	600 gr / 21.1 oz	49x40x34 cm / 19 1/4"x15 3/4"x13 3/8"		7,9 Kg	17.4 lbs

KNEE PADS WITH RIBBING

- For Knee protection.
- Replaceable soft foam inserts.

- Useful when using sand or mortar (mud bed) layouts. The ribbing flexes with the knee so that the knee pad stays in contact with the leg to prevent sand or other particles from getting in between the knee and knee pad.

Prt No.	Barcode	Box	Description	Weight	Dimensions	Volume	Net Weight	Gross Weight
138SOFF	8024648000088	12	Knee pads with ribs (per pair)	610 gr / 21.5 oz	39x35x31 cm / 15 3/8"x13 3/4"x12 1/4"		7,7 Kg	17 lbs

KNEE PADS

- For knee protection.

- Made of molded polyurethane, in one piece. These knee pads are very durable.

Prt No.	Barcode	Box	Description	Weight	Dimensions	Volume	Net Weight	Gross Weight
138	8024648000071	16	Knee pads (per pair)	350 gr / 12.3 oz	39x35x31 cm / 15 3/8"x13 3/4"x12 1/4"		6 Kg	13.2 lbs

"MORBIDONE" FOAM BOARD

- Made of a single piece of molded polyurethane. This foam knee board solves the problem of knee protection for those who cannot wear straps behind the knees.

Prt No.	Barcode	Box	Description	Weight	Dimensions	Volume	Net Weight	Gross Weight
330	8024648000095	5	"Morbidone" Foam knee board	800 gr / 31.7 oz	58x30x25 cm / 22 7/8"x11 3/4"x9 7/8"		4,6 Kg	10.1 lbs

REPLACEMENT PARTS

Prt No.	Barcode	Box	Description	Weight	Dimensions	Volume	Net Weight	Gross Weight
138IM03D	8024648011909	2	Inserts for knee pads with ribs	80 gr / 2.8 oz	27x15x10 cm / 10 5/8"x6"x4"		200 gr	7 oz
196GCA	8024648064141	10	Fabric band with hooks for knee pads	-	-	-	-	-





PACKAGE



"NELSON" ROLLING SEAT WITH KNEE PAD

- Comfortable, strong, steady, designed to prevent occupational injuries associated with the knees and back.
- Ideal for adhesive spreading or any other job where being in a stooped/kneeling position for a period of time is needed.
- Adjustable height from 25 a 35 cm (10" - 13 3/4") to transfer the weight through the seat rather than through the knees.

Prt No.	Barcode	Box Icon	Description	Weight (Kg)	Weight (lbs)	Dimensions (cm)	Dimensions (in)	Weight (Kg)	Weight (lbs)
383COMBI	8024648015396	1	"Nelson"	10 Kg	22 lbs	61x43xh 14 cm	24"x17"xh 5 1/2"	11,4 Kg	25.1 lbs

"NAPOLEONE" SEAT WITH WHEELS

- Comfortable, strong, steady, prevent back and knee strain by sitting and rolling.
- Adjustable height from 27 to 35 cm (10 5/8" - 13 3/4").
- Facilitates jobs such as skirting or wall tiling up to 80/100 cm (31 3/8" - 40") while sitting in comfort.
- The "Napoleone's" (5) five wheel design allows it to roll smoothly and comfortably in any direction.

Prt No.	Barcode	Box Icon	Description	Weight (Kg)	Weight (lbs)	Dimensions (cm)	Dimensions (in)	Weight (Kg)	Weight (lbs)
383TRI	8024648006322	1	"Napoleone"	4 Kg	8.8 lbs	38x36xh 30 cm	15x14"xh 11 7/8"	4,7 Kg	10.4 lbs

"ELIA" BUCKET-HOLDER / TILE DOLLY

- Use with the cover for carrying a bucket or stacks of tile.
- Easy to move on free-spinning wheels (3).
- Use without the cover to tilt the bucket for easier access to the adhesive.

Prt No.	Barcode	Box Icon	Description	Weight (Kg)	Weight (lbs)	Dimensions (cm)	Dimensions (in)	Weight (Kg)	Weight (lbs)
384TRI	8024648006325	1	"Elia"	3 Kg	6.6 lbs	40x40xh 15 cm	15 3/4"x15 3/4"x h 6"	3,4 Kg	7.5 lbs





MADE IN ITALY

394



MADE IN ITALY

394MA RAI

90 cm



MADE IN ITALY

394MA PLUS

min: 100 cm
max: 150 cm

PATENT PENDING

TECHNICAL CHARACTERISTICS



FOLDING LEGS

PACKAGE



CARTON BOX

"PUGIOL" WORK BENCH

- Useful as a work bench and also as a platform due to the strong steel frame.
- Stand folds down for easy transport.
- Work bench size: 45x77xh 74 cm (17 3/4"x30 1/8"xh 29").
- Dimensions in transport position: 100x45xh 11 cm (40"x17 3/4"xh 4 3/8").

Prt No.	Barcode	Box Icon	Description	Weight	Dimensions	Weight
394	8024648003645	1	"Pugiol"	9 Kg 19.8 lbs	100x50xh 12 cm 40"x20"xh 4 3/4"	10 Kg 22 lbs

MODULAR BENCH WITH FOLDING LEGS : BM180 ^{MKII} AND BM180 PLUS

- Both equipped with folding legs to put the product in transport configuration quickly and easily.
- The steel structure and the worktop made of anodized aluminum profiles guarantee sturdiness and stability.
- Both with legs provided with adjustable rubber feet.
- Both provided with adjustable anodized aluminum profiles.
- BM180 ^{MKII}: height: 83 cm (32 3/4"). Max load: 150 Kg (331 lbs).
Worktop dimensions: 180 x 90 cm (3'x6').
- BM180 PLUS: height: 83 cm (32 3/4"). Max load: 150 Kg (331 lbs).
Width: from 100 cm (3.2') up to 150 cm (4.9').

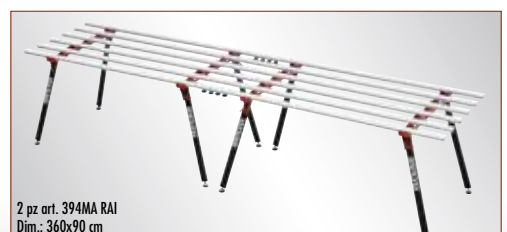
Prt No.	Barcode	Box Icon	Description	Weight	Dimensions	Weight
394MA RAI	8050532000995	1	"BM180 ^{MKII} " - modular bench with folding legs	31 Kg 68.3 lbs	117x20x h 20 cm + 190x21x h 10 cm 46"x8"x h 8" + 75"x8"x h 14"	35 Kg 77 lbs
394MA PLUS	8050532007062	1	"BM180 ^{PLUS} " - modular bench width 100-150 cm modular bench with folding legs	38 Kg 83.7 lbs	117x20x h 20 cm + 190x21x h 10 cm 46"x8"x h 8" + 75"x8"x h 14"	39,8 Kg 87.7 lbs



1 pz art. 394MA PLUS
Dim.: 180x100-150 cm



1 pz art. 394MA RAI
Dim.: 180x90 cm



2 pz art. 394MA RAI
Dim.: 360x90 cm



RV175 - "VACUUM" PUMP SUCTION CUP WITH VACUUM GAUGE

MADE IN ITALY

VENTILATE ANTIRIFLESSO ANTIMACCHIA STAIN FREE (PER COPRIE)



185WA01VRVY



Maintenance kit and protection cup



PACKAGE



CARTON BOX

"VACUUM" PUMP SUCTION CUP WITH VACUUM GAUGE

- RV 175: "vacuum" pump suction cup with vacuum gauge designed for handling ceramic tiles and slabs that guarantees perfect grip even on textured tiles. RV 175 is also suitable for lifting any non-porous material such as marble, granite, glass, etc.
- The vacuum gauge allows to constantly monitoring the gripping status of the suction cup, informing the operator when it is necessary to restore the vacuum level.
- The stain-free rubber cup is easily removable from the die-cast aluminum main body and can therefore be replaced if necessary.
- RV 175 is equipped with a carry case, complete with protection cup and maintenance kit.

- The vacuum gauge is protected against impacts and can be easily replaced, if necessary. In the event of accidental breakage, a dedicated screw is included into the maintenance kit, which allows the suction cup to be used without the vacuum gauge.
- High performance vacuum valve, resistant to corrosion.
- Maximum load capacity: 130 Kg (286.6 lbs). Safety factor 1.5.
- Ø 175 mm (6 7/8") cup.

MODEL AND SPECIFICATIONS

Prt No.	Barcode	Qty	Description	Weight	Volume	Dimensions	Weight	Volume	
185WA01VRVY	8050532011281	1	RV175 - "Vacuum" pump suction cup with vacuum gauge	1,7 Kg	3.7 lbs	34x30xh 13 cm	13 1/2" x 11 x h 5 1/8"	2,2 Kg	4.8 lbs

SPARE PARTS

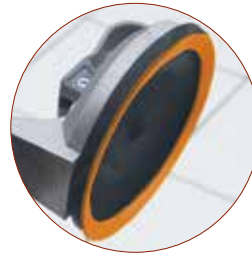
Prt No.	Barcode	Qty	Description	Weight	Volume	Dimensions	Weight	Volume
185WR01A	8050532011434	1	Suction cup rubber + pads	145 gr	5.1 oz	-	-	-
185WR02A	8050532011441	1	Vacuum gauge + OR	30 gr	1 oz	-	-	-



TOOLS



185



140FU03D



185BI



185TRI



PACKAGE



CARTON BOX

SUCTION CUP

- Ergonomic grip with lever for one handed use (down = suction, up = release).
- Maximum lifting load 40 Kg – 88 lbs (on clean and smooth surfaces).

- Ø 115 mm (4 1/2") rubber cup with welded metallic pin.
- Grey stain-free rubber.

Prt No.			Description			
185	8024648000354	10	"Medusa"	350 gr 12.3 oz	35x35xh 14 cm 13 3/4"x13 3/4"xh 5 1/2"	3,8 Kg 8.4 lbs

DOUBLE SUCTION CUPS

- Made of cast aluminum.
- Ø 115 mm (4 1/2") rubber cups with welded metallic pin.

- Maximum lifting load 90 Kg (198 lbs) on clean and smooth surfaces.
- Grey stain-free rubber.

Prt No.			Description			
185BI	8024648000361	5	Double suction cup	900 gr 31.7 oz	35x35xh 14 cm 13 3/4"x13 3/4"xh 5 1/2"	4,8 Kg 10.6 lbs

TRIPLE SUCTION CUPS

Made of cast aluminum. Ø 115 mm (4 1/2") rubber cups with welded metallic pin. Maximum lifting load 140 Kg (309 lbs) on clean and smooth surfaces.

Prt No.			Description			
185TRI	8024648000378	3	Triple suction cup	1,2 Kg 2.6 lbs	35x35xh 14 cm 13 3/4"x13 3/4"xh 5 1/2"	4 Kg 8.8 lbs

FOAM WASHER – FOR TEXTURED SURFACES

- Self-adhesive foam washer: if stuck under the cup it increases the hold on rough surfaces.

Prt No.			Description			
140FU03D	8024608011932	1	H 2 mm-3/32" self-stick washer	10 gr 0.35 oz	– –	100 gr 3.5 oz

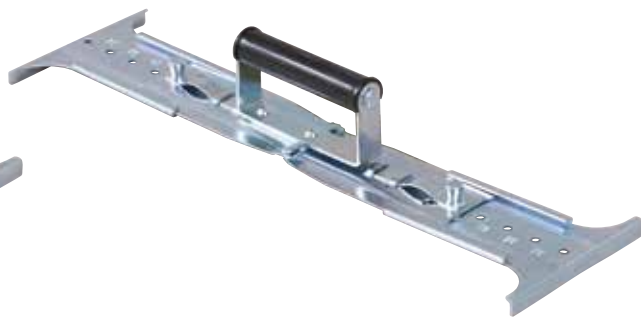


SLABS LIFTERS

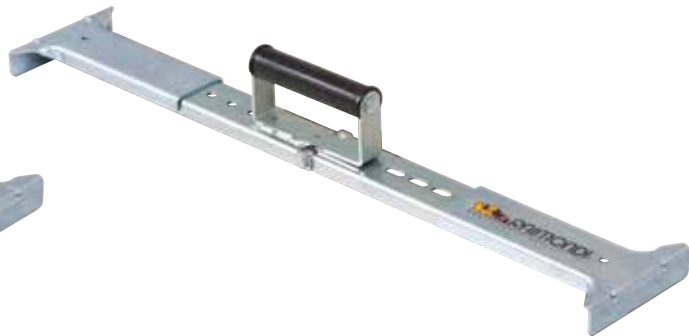
MADE IN ITALY



144



144CM50-65



144CM50-120



SLAB LIFTER (MAX EXTENSION 50 cm)

- To lift and lay tiles and large stone, such as terrazzo, etc..
- To facilitate lifting and reduce stress to the hands and fingers.

- For sizes of: 30-35-40-45-50 cm (11 7/8"-13 3/4"- 15 3/4" - 17 3/4" - 19 5/8").

EXTENDING SLAB LIFTERS 50-65

- For handling and laying large format slabs (max 65x65 cm - 25 1/2") with high thickness and structured surfaces.
- Variable extension from 50 to 65 cm (19 5/8" to 25 1/2").

- Sturdy and reliable galvanized steel structure.
- Minimum required joint: 3 mm (1/8").

EXTENDING SLAB LIFTERS 50-120

- For handling and laying large format slabs (max length 120 cm - 47 1/4") with high thickness and structured surfaces.
- Variable extension from 50 to 120 cm (19 5/8" to 47 1/4").

- Sturdy and reliable structure made of aluminum and steel.
- Double handle.
- Minimum required joint: 3 mm (1/8").

Prt No.	Barcode	Box Icon	Description	Weight Icon	Weight	Dimensions Icon	Dimensions	Weight	Weight
144	8024648000347	10	Slab lifter	1,1 Kg	2.4 lbs	40x40 xh 15 cm	15 3/4"x15 3/4"xh 6"	11,4 Kg	25.1 lbs
144CM50-65	8024648084071	2	Extension for slab lifter 50/65 cm	2 Kg	4.4 lbs	71x23xh 12 cm	28"x9"xh 4 3/4"	4,3 Kg	9.5 lbs
144CM50-120	8024648084750	2	Extension for slab lifter 50/120 cm	4,4 Kg	9.7 lbs	117x20xh 20 cm	46"x8"xh 8"	10,2 Kg	22.5 lbs





TEMPERED STEEL MORTAR SPREADER

- To spread cement and sand screed, asphalt, sand mixtures etc... • Strong and light. Can be used with aluminum pole 133-178 cm (70" - 52").

Prt No.	Barcode	Box	Description	Diagram	Weight	Volume	Dimensions	Weight
141PASQ	8024648000972	12	Steel mortar spreader without pole	55 cm 21 5/8"	820 gr 28.9 oz	58x30xh 25 cm	23"x12"xh 10"	10,3 Kg 22.7 lbs

ANODIZED ALUMINUM POLE

- Superior strength, available in multiple lengths. Sectional version also available.

Prt No.	Barcode	Box	Description	Ø	Diagram	Weight	Volume	Dimensions	Weight
197180CM	8024648000644	12	With hole	27 mm	178 cm 70"	600 gr 21.2 oz	180x25xh 25 cm	70"x10"xh 10"	7,7 Kg 17 lbs
197CF	8024648000316	12	With hole	1/16"	133 cm 52"	420 gr 14.8 oz	140x25xh 9 cm	55"x10"xh 3 1/2"	5,5 Kg 12.1 lbs
197SC	8024648014511	12	Sectional with hole		530 gr 18.7 oz	71x23xh 15 cm	28"x9"xh 6"	6,7 Kg 14.8 lbs	

"SLITINO" STEEL SLIDE KIT

- Kit of 4 steel slides, 1500x50x5/10 mm (4'1"x2"x 9/16").
- To be laid on reference strips to make up the screed rails, creates a straight, smooth surface for the level or screed to slide on.

Prt No.	Barcode	Box	Description	Diagram	Weight	Volume	Dimensions	Weight
145SLITTA	8024648004635	1	Slides for screed (kit 4 pcs)	150 cm 59"	1,1 Kg 2.4 lbs	31x31xh 5 cm	12 1/4"x12 1/4"xh 2"	1,3 Kg 2.9 lbs

"KESSLER" HANDLES FOR STRAIGHT EDGE / LEVELS

- Now you can put a pair of "handles" on your straight edge or level. A unique way to give your old straight edge, screed bar, or level, an ergonomic upgrade.
- For straight levels of minimum height of 50 mm (2") and thickness from 15 to 35 mm (5/8" - 1 3/8").

Prt No.	Barcode	Box	Description	Weight	Volume	Dimensions	Weight
421	8024648007124	1	"Kessler" (pair)	900 gr 35 oz	-	-	2 Kg 4.4 lbs

SHEATH-PRESSER

- Roll for easy, fast, and even, laying of preformed membrane laid with adhesive.
- Height-adjustable-shaft provided with double handles.
- Available also the version for use on wall or small areas (art. 232 WALL R).

Prt No.	Barcode	Box	Description	Weight	Volume	Dimensions	Weight
232 RAI	8024648073587	4	Sheath-presser-roller	5,8 Kg 12.8 lbs	135x42xh 28 cm	53"x16 1/2"xh 11"	26,7 Kg 58.9 lbs
232WALL R	8024648097415	4	Sheath-presser-roller for wall	0,7 Kg 1.5 lbs	20x21xh 5 cm	8x8 1/4"xh 2"	7,7 Kg 3,5 lbs



ANTI-BOUNCE HAMMERS AND HAND TILE BEATERS



1761KGBC



176500BC



142



142G

PACKAGE



CARTON BOX

WHITE, NON-MARRING RUBBER MALLET

- The white non-marring rubber leaves no mark on the tile.
- All mallets are balanced to reduce stress to the wrists.
- Molded in a single-piece, the handle is reinforced with a steel core for superior strength.

Prt No.	Barcode	Box	Description	Weight	Dimensions	Volume	Weight	
1761KGBC	8024648098122	8	White rubber mallet	1 Kg	2.2 lbs	40x32xh 12 cm	15 3/4"x12 5/8"xh 4 3/4"	8,5 Kg 18.7 lbs
176500BC	8024648098139	12	White rubber mallet	500 gr	17.6 oz	40x32xh 12 cm	15 3/4"x12 5/8"xh 4 3/4"	6,5 Kg 14.3 lbs

PLASTIC TILE BEATER

- Prevents tile lippage and ensures adequate bond between tile and adhesive.
- Plastic construction does not warp with humidity.
- Grooved, flat base prevents suctioning so the beater does not stick to the tile.
- The off-set handle provides a larger striking surface. Depth: 15 mm (5/8").

Prt No.	Barcode	Box	Description	Weight	Dimensions	Volume	Weight	
142	8024648000910	6	Plastic tile beater	1,5 Kg	3.3 lbs	17x37 cm 6 1/2"x14 1/2"	40x40xh 15 cm 15 3/4"x15 3/4"xh 6"	9,4 Kg 20.7 lbs

RUBBER ANTI-BOUNCING TILE BEATER

- To improve adhesive bonding and to expel air from underneath the slabs/tiles.
- Rubber bottom to prevent tiles/slabs damages.
- Sturdy metal framework.
- The off-set handle increases effectiveness.

Prt No.	Barcode	Box	Description	Weight	Dimensions	Volume	Weight	
142G	8024648078582	6	Rubber tile beater	1,9 Kg	4.2 lbs	145x350 mm 5 3/4"x13 3/4"	40x40xh 15 cm 5 3/4"x12 5/8"xh 4 3/4"	11,4 Kg 25.1 lbs





WOLFRAM CARBIDE DISCS FOR GRINDER

• Suitable for: cement, wood, bricks, plastic plaster, marble, tiles, adhesive, plastic, fibreglass, rust, paints,,etc.

- Performance: last 150 times more than sand paper. Working times: reduced to 30/50% when compared to sandpaper.
- It does not get easily blocked. It gets simply cleaned with a steel-wire brush.

Prt No.	Barcode	Box	Description	Ø	Grain	Weight	Box Dimensions	Weight
273D115 W14	8024648074751	1	Wolfram carbide discs for grinder	115 mm 4 1/2"	14	0,3 Kg 10,6 oz	-	-
273D115 W24	8024648074768	1	Wolfram carbide discs for grinder		24			
273D115 W36	8024648074775	1	Wolfram carbide discs for grinder		36			
273D125 W14	8024648074782	1	Wolfram carbide discs for grinder	125 mm 5"	14	0,27 Kg 9,5 oz	-	-
273D125 W24	8024648074799	1	Wolfram carbide discs for grinder		24			
273D125 W36	8024648074805	1	Wolfram carbide discs for grinder		36			
273D180 W14	8024648074812	1	Wolfram carbide discs for grinder	180 mm 7"	14	0,5 Kg 17,6 oz	-	-
273D180 W24	8024648074829	1	Wolfram carbide discs for grinder		24			
273D180 W36	8024648074836	1	Wolfram carbide discs for grinder		36			

"FAKIRO" PLASTER RASP

• To remove irregularities on the plaster surface prior to finishing.

Prt No.	Barcode	Box	Description	Dimensions	Weight	Box Dimensions	Weight
347RAS480	8024648015402	9	"Fakiro" Plaster Rasp 480 V	25x14,5 cm 10"x5 3/4"	400 gr 14.1 oz	40x40xh 15 cm 15 3/4"x15 3/4"xh 6"	4 Kg 8.8 lbs
347RIC480U	8024608059307	24	Replacement blades	25x14,5 cm 10"x5 3/4"	300 gr 10.6 oz	33x33xh 10 cm 13"x13"xh 3 5/16"	7,6 Kg 16.8 lbs

SCRAPER WITH STEEL BLADE

To remove adhesive, paint, etc... waste. Can be pole mounted to be used in a standing position.

Prt No.	Barcode	Box	Description	Scraper Blade Size	Weight	Box Dimensions	Weight
347 10	8024648000699	10	"Ginetto" steel blade scraper	10 cm 4"	260 gr 9.2 oz	33 x 33 xh 10 cm 13"x13"xh 3 5/16"	3 Kg 6.6 lbs
347 15	8024648000705	10	"Ginetto" steel blade scraper	15 cm 6"	320 gr 11.3 oz		3,6 Kg 7.9 lbs
347 20	8024648000712	10	"Ginetto" steel blade scraper	20 cm 8"	380 gr 13.4 oz		4,2 Kg 9.3 lbs
347 25	8024648000729	8	"Ginetto" steel blade scraper	25 cm 10"	440 gr 15.5 oz		3,9 Kg 8.6 lbs

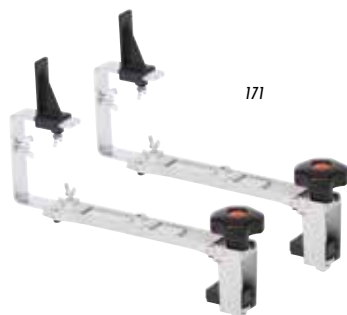
ANODIZED ALUMINUM POLE

• Superior strength, available in multiple lengths. Sectional version also available.

Prt No.	Barcode	Box	Description	Ø	Length	Weight	Box Dimensions	Weight
197180CM	8024648000644	12	With hole	27 mm 1 1/16"	178 cm 70"	600 gr 21.2 oz	180x25xh 9 cm 70"x10"xh 10"	7,7 Kg 17 lbs
197CF	8024648000316	12	With hole		133 cm 52"	420 gr 21.2 oz	140x25xh 9 cm 55"x10"xh 3 1/2"	5,5 Kg 12.1 lbs
197SC	8024648014511	12	Sectional with hole		133 cm 52"	530 gr 18.7 oz	71x23xh 25 cm 28"x9"xh 6"	6,7 Kg 14.8 lbs



MADE IN ITALY



PACKAGE
CARTON BOX

LEVEL PLUMB JOINTED SQUARE

- This is truly a one of a kind level. There are positive stops at 0°/45°/90°/135°/180° all on one level.
- The unique design allows this level to be folded in half for convenient storing.

- 45° position for laying out diagonal floors.
- 90° position for setting square on floors or to check the plumb.
- 180° position to check the level and to take measurements (item 186 up to 200 cm - 6' 6 3/4"; item 187 up to 100 cm - 3' 3 3/8").

Prt No.	Barcode	Box	Item	Weight	Volume	Dimensions	Dimensions	Weight	Volume
186	8024648000859	1	100 cm	1,2 Kg	2.6 lbs	102x12xh 6 cm	3' 4 1/8" x 4 3/4" x h 2 3/8"	1,4 Kg	3.1 lbs
187	8024648000866	1	50 cm	800 gr	28.2 oz	52x12xh 6 cm	1' 8 1/2" x 4 3/4" x h 2 3/8"	800 gr	28.2 oz

DIAGONAL - ALL ANGLE GUIDE

- The easy and accurate way to measure the angle and size of cuts when laying out diagonal floors.

- Especially helpful where walls/rooms are out of square.
- The sliding bar allows measurements to be taken into corners.

Prt No.	Barcode	Box	Description	Weight	Volume	Dimensions	Dimensions	Weight	Volume
252 50	8024648000897	5	Diagonal 50	1,15 Kg	2.5 lbs	50 cm	19 5/8"	-	-

SPEED - STAIRS SETTER

- For fast and accurate setting of steps.
- They replace the use of the bricks, prevents the movement of the tread and the riser.
- The 90° upright keeps the riser in the desired position.
- The graduated and sliding staffs show the projection of the tread over the riser.

- Can be used for tread depth of 5 to 55 mm (from 7/32" to 2 1/8").
- Only useful for monolithic tread and with lowest projections 25 mm (1").

Prt No.	Barcode	Box	Description	Weight	Volume	Dimensions	Dimensions	Weight	Volume
171	8024648000941	8	Speed (pair)	1,5 Kg	3.3 lbs	38x36xh 30 cm	15"x14"xh 12"	13 Kg	28 lbs

KRICK KROCK- WALL LEVELLING GUIDES

- Replaces traditional methods such as tacking in supports or shimming with tile etc....
- Precise "micrometric" adjusting knobs allow you to level your first row of tiles quickly and accurately.
- Especially useful in high moisture areas where a waterproofing membrane is being used and cannot be

- punctured.
- Especially useful where the floor has slope so that is not possible to start laying directly from the floor.
- Maximum extension 30 cm (12").

Prt No.	Barcode	Box	Description	Weight	Volume	Dimensions	Dimensions	Weight	Volume
131 1	8024648000958	3	Krick Krock	700 gr	24.7 oz	33x33xh 10 cm	13"x13"xh 4"	2,5 Kg	5.5 lbs



TOOLS